



TAY Programming

- We are presenting a "macro to micro" vision for TAY Programming. This vision is holistic and inclusive (facilities & field) for a continuum of services ushering in a new era of localized juvenile justice founded on community-based services and incarceration alternatives.
- We (Kathleen & Senta) must be the lead consultant team to execute and effectively implement this model from a developmental, mental, and behavioral health and community-based interactive core practice model.

Ventura County Probation Agency

*Transitional Age
Youth
18-25 Years
Program Model
2023*





This Photo by Unknown Author is licensed under [CC BY-SA](#)



Van Antwerp- Greene 2023

This Photo by Unknown Author is licensed under [CC BY-SA](#)

Youth & Human Developmental Specialists for Law Enforcement Senta & Kathleen

- Senta: Certified Child Life Specialist
- Dr. K : Certified Mental Health / Behavioral Specialist
- State Certified Trainers/Board of Community Corrections
- Certified Mental Health Trainers National Center for Youth Opportunity & Justice
- Ventura County Crisis Intervention Trainers
- LA County Sheriff's Youth Foundation Directors of Programs
- LAPD – Youth Diversion Trainers
- LAPD – Knowledge-Based Parenting
- D.A.'s Office – Co-Curriculum Development
- FBI- Co-Curriculum Development
- National Police Activities League- Trainers
- California Police Activity League- Trainers

- Deep respect for your work and the impact probation officers have on the families and youth in our community- maintain public safety and supporting constructive growth and development of youth and emerging adults and reduce recidivism.



Ventura County Probation Agency

Mission

- To promote effective interventions, individual accountability and community well-being

Vision

- Transforming and empowering lives to build a strong community

- TAY Programming Model will be reflective of the mission & vision of VC Probation Agency

Values Statement for TAY Programming Lifting the Core Values of VC Probation Agency

- **Collaboration**
We actively build networks of support and strive to create shared solutions on issues impacting our communities.
- **Dedication**
We demonstrate the highest level of integrity, professionalism, and compassion as a committed workforce.
- **Empowerment**
We connect people to resources and opportunities to encourage change and personal responsibility, which are cornerstones to building safe communities.
- **Excellence**
We are innovative, adaptable, and determined to continuously improve.
- **Respect**
We believe in a positive, empowering, and supportive work environment that encourages the sharing of diverse opinions.
- **Support**
We focus on restoration by providing access to trauma-informed services and facilitating healing.

June/July 1, 2023

- Probation works collaboratively with the human development team for alternatives to incarceration, community-based connections, and tracking of supports and services through a structured and deliberately organized program.
- There are different pathways for case management work that probation will have access to, including but not limited to education, housing, career and vocation training and support, mental and behavioral health services, and innovative programs linked directly to the research and evidence-based inform practices for juvenile justice.
- Each officer will have access to a community navigator or a team of community navigators to identify such services and supports and to track the outcomes of those services and supports. (Ventura County, Parents Voices, Network of Care/CAPC)
- Community Connection series: An educational program model that provides weekly training on a host of topics, including “Life Back Into the Community,” “Building Relationships with Loved Ones: From Rupture to Repair,” and “Conflict Resiliency.” A team of diverse content experts reflecting the community and TAY. (multi-talented, multilingual, multi-cultural, multi-ethnic, multigenerational, and gender identification).
- Focus Groups for Officers, Youth, Family and Community Partners

Integrated Core Practice Model (ICPM)

- Released in 2018, in support of the Continuum of Care Reform (CCR) and Pathways to Well-Being efforts, the ICPM is an articulation of the shared values, core components, and standards of practice expected from those serving California's children, youth, and families. ICPM provides practical guidance and direction in the delivery of timely, effective, and collaborative services. Additionally, the ICPM helps create a culturally relevant and trauma-informed systems of care that strengthens the voice and choice of the child, youth, and family and builds consensus around their strengths and needs in service planning and delivery. The practice of working together as a team is at the heart of ICPM and central to the implementation of family-centered practice and CCR.
- **TAY Programming will be directly correlated to the ICPM of Ventura County.**





Ventura County Probation Agency TAY Developmental Milestones

- Approximately 5,500,000 TAY live in California. This group faces unique challenges in development, physical and mental health, housing, education, career training, employment, life skills, and relationships. TAY is particularly vulnerable to various biological, behavioral, and social issues due to difficulties that may arise when transitioning from childhood to adulthood. TAY who are or were placed in out-of-home settings is more likely than youth in the general population to experience physical and mental health conditions, making this transition period more difficult. Furthermore, youth in this age range are aging out of services provided by correctional youth facilities and moving into community-based services, which may need to be more cohesive and developmentally appropriate.
- **TAY Programming is designed from a holistic, developmental lens.**

TAY Programming Goals

Align with VC Probation Mission/Vision

- Goal 1 =Expand on current partnerships to manage an effective collaborative focused on the target population (ICPM)
- Goal 2= Develop coordinated services to provide programming needs
- Goal 3= Create and implement an evaluation plan to determine if the services addressed the needs of the target population and lessened the risk of recidivism
- Goal 4 = Align TAY programming with current reform



Critical Inclusive Considerations

- Disabilities (Students eligible for services 18-22 years old with active IEPs and referrals for or clients of Regional Center for the lifespan)
- LGBTQ+
- Dual Language Learners
- Homeless-TAY Tunnel

TAY Essential Elements of the Comprehensive Program and Design Model Youth/TAY and Probation

Juvenile Justice Facilities

Proactive Programming including critical inclusive considerations

Community Navigation for Re-entry and Re-Integration

Resources for TAY, Community, and Family Support

Reflective Supervision, Professional Learning and Development for POs and Transition Specialist

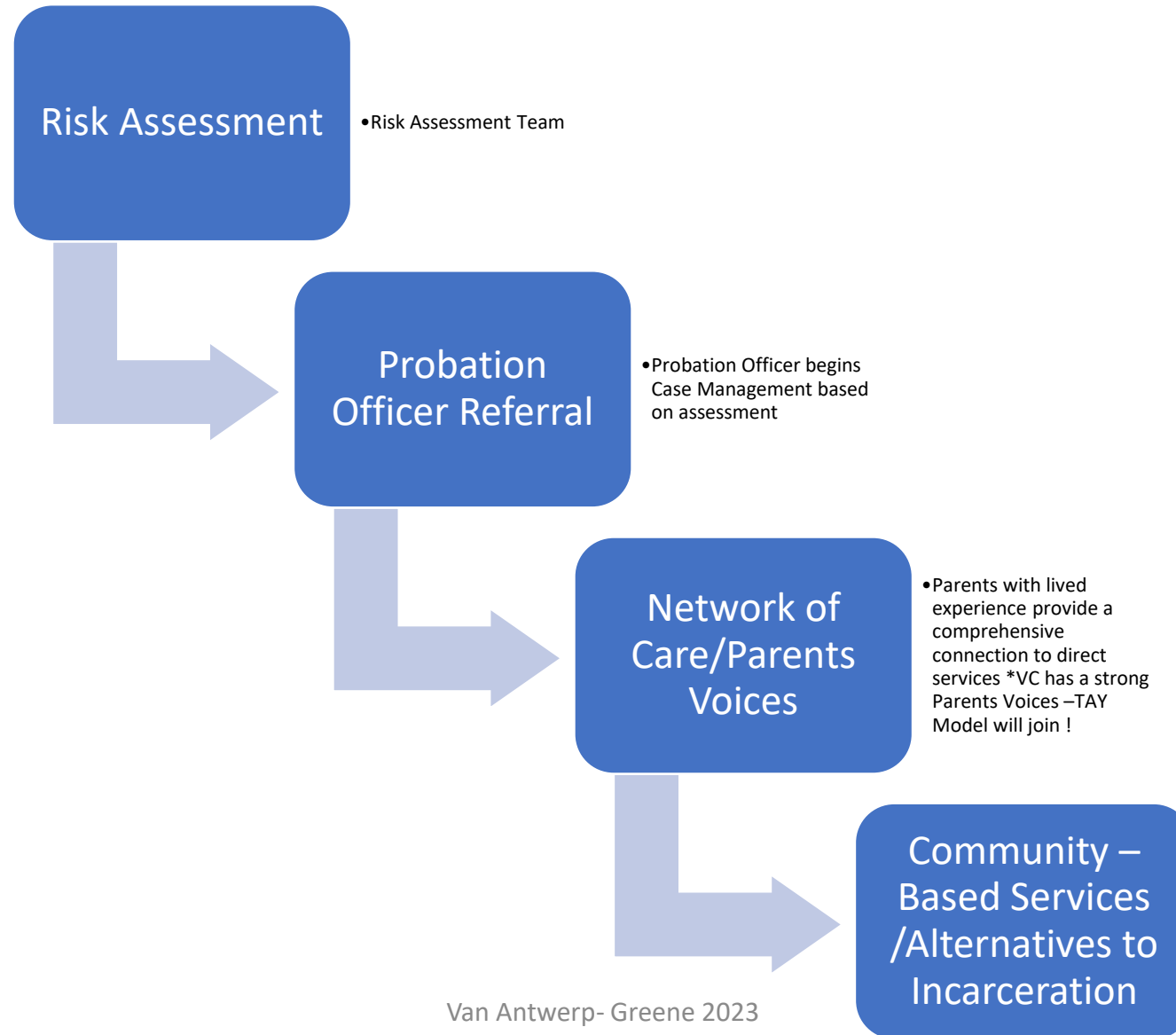
Research, Evaluation and Dissemination



TAY Program Model Child (Youth)/Family/School/ Community Model

- Holistic
- Timely
- Individualized
- Family-centered
- Strength-based
- Rehabilitative Focus/ Life-skills
- Resources and technical expertise shared across systems
- Continuity of supports during and post transition
- Sense of Agency and Positive Future

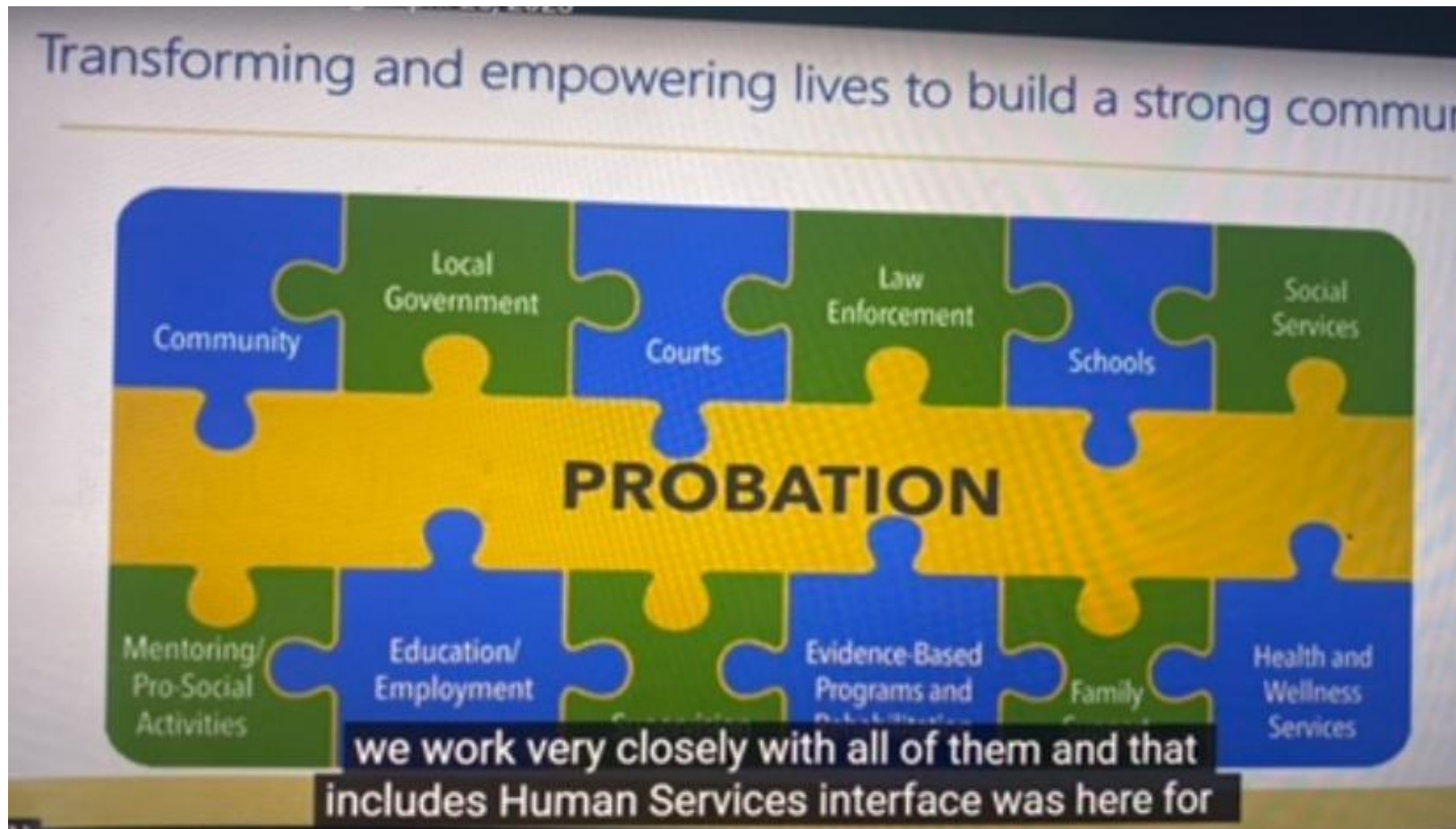
TAY Programming Process



Continuum of Programming JF-TAY Deepening on all Levels

- Mental Health & Wellness
- Health-Holistic/ physical/ social-emotional/ cognitive/spiritual/cultural
- Growth & Development- TAY Development (Brain Maturation)
- Re-entry
- Recreation & Exercise- Community- Based Connections
- Religious Services (Faith-Based Connections)

BOS presentation



- Housing
- Food
- Clothing
- Health care
- Education including academic placement assistance
- Employment/Training/Skills Development Program
- Financial Literacy
- Computer Literacy/Technology
- Social-Emotional Learning/anger management
- Mental health/psychosocial support
- Treatment programs
- Innovative therapeutic programs (art, music, biophilia)
- Emergency hotlines
- Community mentorship
- Support Groups
- Spiritual/Religion/Faith-based Connections
- Recreation and health
- Healthy Relationships
- Knowledge-based Parenting/CPTP
- Resources for abused/neglected youth
- Location monitoring in the community

Developmentally Responsive Programs and Services including opportunities for collaboration through the Multifaceted, Integrated Safety Program and Transforming and Empowering Lives To Build A Strong Community

- Mentoring Prosocial Activities
- Local Government
- Education/Employment
- Social Services
- Schools
- Family Support
- Health and Wellness
- Evidence-based Programs and Rehabilitation
- Courts
- Community

Full Circle Weekly Online Education

- 10-12 Content Experts
- Content based on training needs assessment survey
- Delivered virtually via zoom 1.5-2 hours in duration
- LIVE Spanish Interpretation
- Topics in all areas identified in TAY Programming
- Tracking of participants/participation
- Certificates available for completion of courses
- Example Topics:
 - Career Pathways
 - Life After Struggle
 - Coping & Communication
 - Parenting
 - The Wellness System





Masterclass

Participation Levels:

- Individual access to a host of classes for Youth/TAY (self-selected/self-paced)
- Individual access with mentorship (self-selected classes, learning agenda, independent study with scheduled feedback and check-in loops)
- Small Group/Cohort Experience (self-selected classes, learning agendas, discussion groups, independent study with scheduled feedback and check-in loops)

***Classes are based on youth/TAY interests, motivations, aspirations/wants, hobbies, skills (before and/or upon of exit), and goals and provides collaboration with PO

Child Life Specialist Model for Family Visitation (Facility & TAY)

What The Model Does for Youth, Families and Officers: Decrease Stress, Lower Levels of Fear and Anxiety, Increase Cooperative Behaviors, Better Long -Term Coping and Adjustment

PREPARATION:

The Environment is Prepared to Receive (Families, Youth and Officers)

-Safe, supportive, engaging, constructive, attractive, choice-based; materials and activities are age/developmentally responsive and human-centered

-Experiences are planned and rehearsed

- **Social**

-Promotes connection, interactions, and attunement

- **Emotional**

-Promotes coping, normalization, and regulation

- **Physical**

-Sensory motor experiences (vision, movement, music)

- **Cognitive**

-Problem solving, distraction activities, a sense of joy despite circumstances)

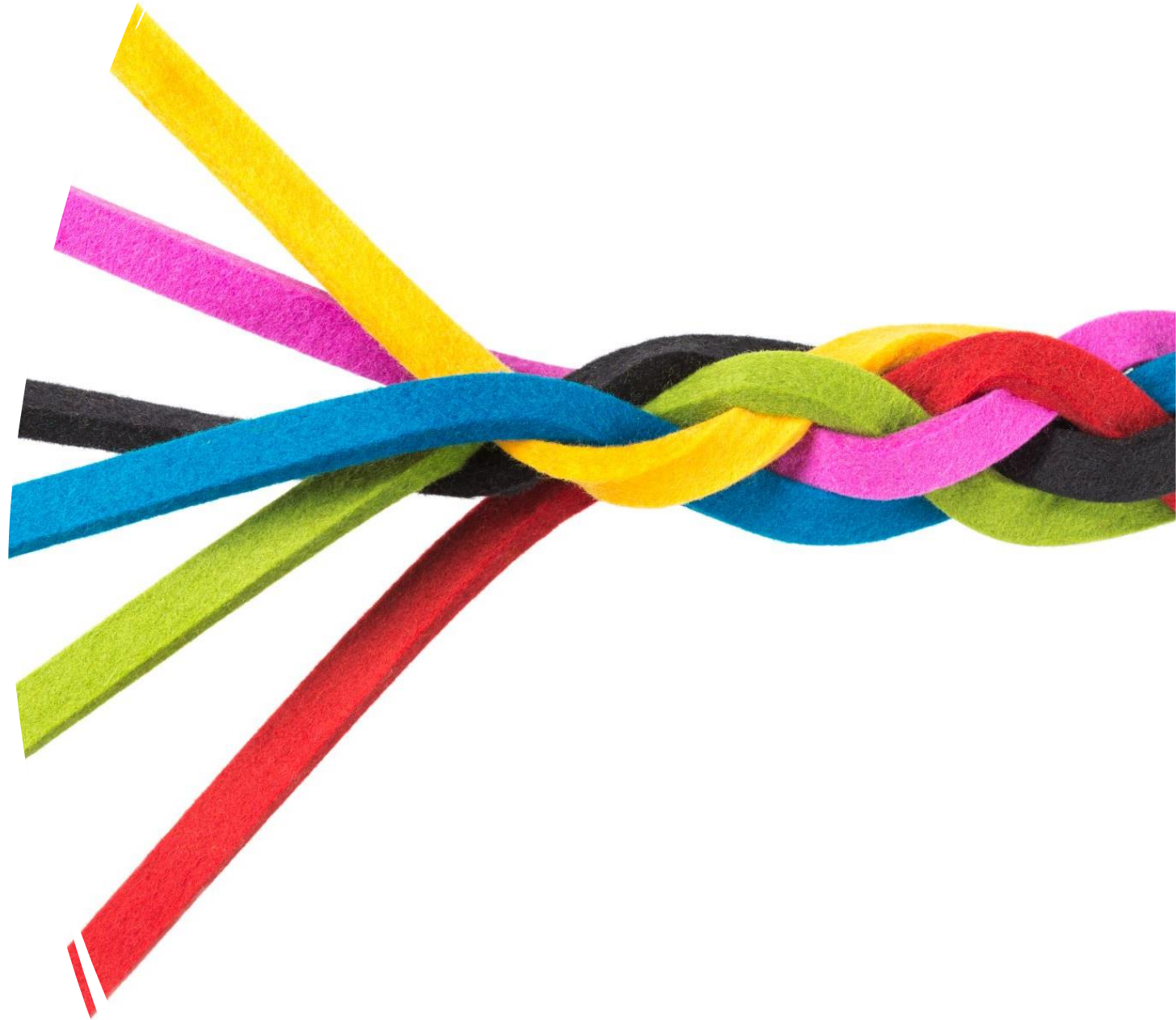
PHILOSOPHY AND PRACTICE:

- Family Attachment Theory (from rupture to repair- the breaking and restoring of connection)

- Five Love Languages (physical, words of affirmation, gifts, acts of service, and quality time)– if physical touch is not allowed due to six feet apart security measures, how can the room facilitate words of affirmation (words with sentence stems and conversation starters are throughout the room, learning emotional communication and literacy-get educated) how can the youth engage in acts of service through gifting (family gift workshops as part of programming),

Focus Group
Categories/Implementation/CAPC

- Facilities- TAY as well as Officers
- Interactions-Relationships
- Environment
- Family Engagement
- Programming
- Community Partners
- Training/PD



Continuous Professional Training/Reflective Supervision

- Many staff supervising youth on probation or in detention and correctional settings receive limited training to help them understand adolescent development, behavioral health and child trauma, and associated behaviors commonly exhibited by the youth in their care. This situation carries numerous consequences for staff and youth alike and can lead to the use of ineffective and unnecessarily punitive responses with youth. These responses can unintentionally worsen a youth's mental health and/or trauma-related symptoms and, as a result, their behavior.
- **TAY Programming model will incorporate ongoing professional development through a variety of options.**

Focus Group Questions for Officers:

Facilities, Interactions, TAY, Training

Questions from Article, Questions from CASA, Questions from previous Probation

Imagine yourself in the facility, what do you like best as a worker in the facility?

What creates the greatest amount of stress in the facility?

If you could change one thing, what would you change and why?

Most Pressing Issues in Re- entry Mitigated by TAY Programming

Several states report 55% of young people released from JJ are rearrested within a year

Programs and models are limited, exhausted early on, lack relevance and skill building for positive and healthy outcomes for sustainable re-entry and re-integration in family, school, work, and larger community

No clear plan

Return to peer groups/ peer relationships

Academic disengagement

No employment

Drugs

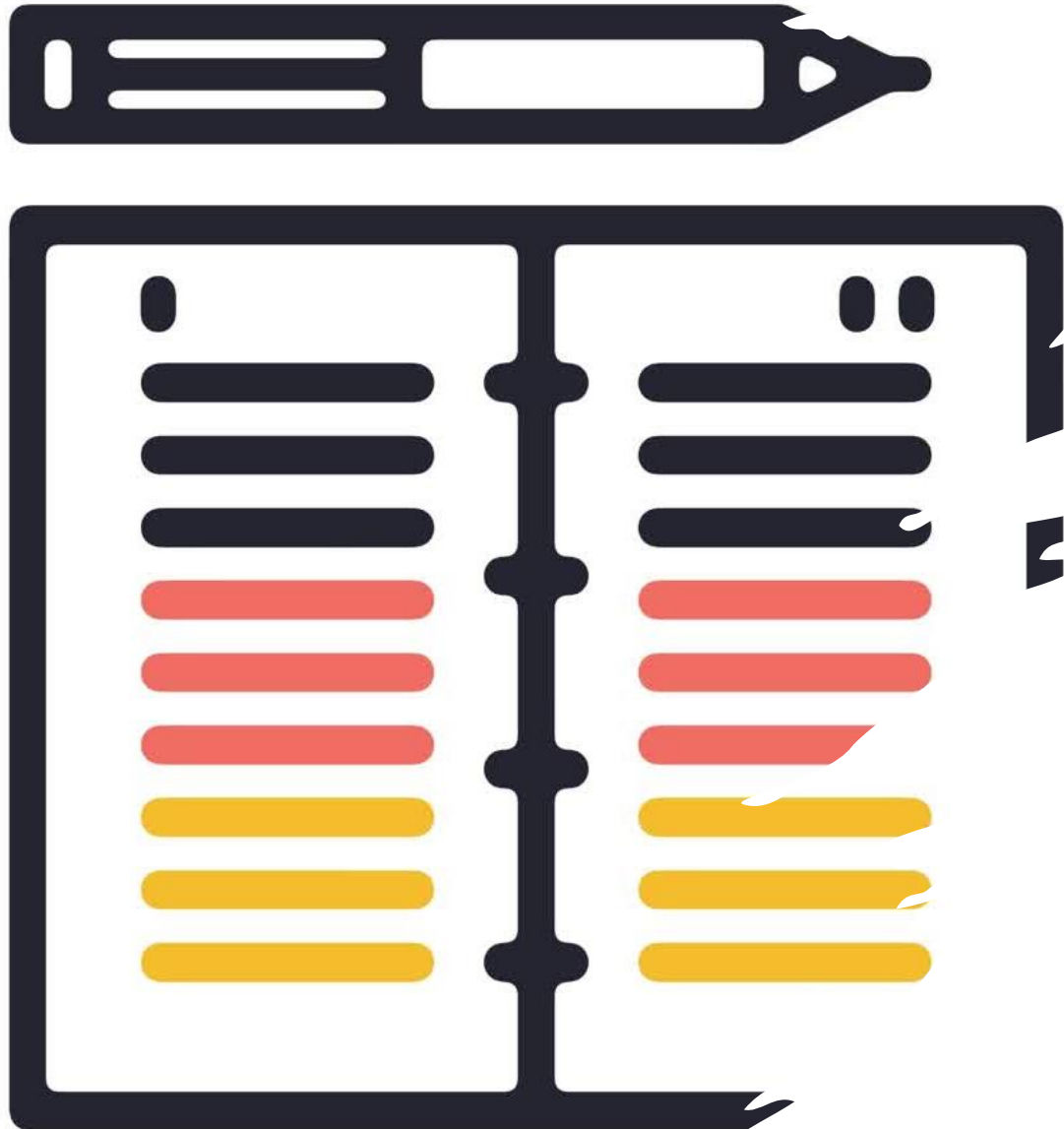
Parents feeling helpless

Youth trying to cope with issues of trust, fear, anxiety and impatience

Multi-Cultural/Multi-Lingual Programming

- All programming documents will be translated into Spanish
- Programming will have Spanish speaking options
- All online webinars/courses/meetings will offer a LIVE Spanish Interpretation options.





Action/ Documentation Tracking

- Key Project Goals/ Milestones
- Measurable Objectives
- Implementation & Including Feedback Loops
- Timeline

VC TAY Programming Highlights

- [Operates](#) TAY Programming throughout Ventura County focused on moderate- high offenders.
- [Serves](#) approximately 100 TAY annually.
- [Provides](#) a presence and the active involvement of law enforcement in the lives of at-risk TAY, which is what makes our program so distinctive and effective.
- [TAY](#) are coached, tutored, mentored and supported by a Probation Officer whose full-time job is to case manage and support healthy transition.
- [Offers](#) comprehensive TAY programs designed to meet the social, emotional, cognitive and physical needs of TAY ages 18-25.
- [Offers](#) programs in communities with the highest rates of school drop outs, gangs, drugs, and violence.
- [Fosters](#) emotional well-being and resilience by providing safety, stability, and consistency to TAY which helps to build and strengthen core resiliency characteristics.
- [Provides](#), on a monthly basis, an opportunity for TAY to participate in community service. Through volunteering and community involvement,
- [Provides](#) financial literacy and career exploration and experience.
- [TAY learn](#) that as citizens in a community, they have a responsibility to keep the community clean, safe and successful.

VC TAY Programming

- Improves the lives of at risk and underserved children and families on a daily basis.
- Offers a safe and comprehensive TAY development programs, positive role models and access to a wide range of activities and resources
- Enhances academic and cognitive performance through tutoring, computer learning centers, the arts and the sciences.
- Stays closely connected to local school districts/colleges/vocational programs through collaboration and partnership.
- TAY learn that as citizens in a community, they have a responsibility to keep the community clean, safe and successful.
- Enables TAY to participate in our programs for multiple years, providing continuous support and healthy development.
- Creates opportunities for TAY to participate as mentors.

Tay Programming Mitigating Identified Risk Factors

The risk factors listed by domain below have been identified across multiple sources.

- **Individual level:** Antisocial behavior such as vandalism, physical fighting, or substance use and behavioral health issues.
- **Family level:** Antisocial behavior or criminality/justice system involvement by parents, insufficient parental supervision, victimization or maltreatment of children, children's repeated exposure to family violence. • **Peer level:** Gang involvement, association with delinquent or aggressive peers.
- **School level:** Youth's poor academic performance and/or low commitment to school, school climate characterized by low levels of safety and bonding with teachers.
- **Community level:** Crime, poverty, availability of weapons, neighborhood disorganization

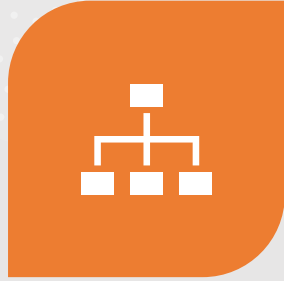


Protective Factors to Mitigate Risk

Individual level: High expectations and positive/resilient temperament, social competencies and problem-solving skills, commitment to community and school, religiosity/involvement in organized religious activities.

- **Family level:** Positive parenting, family stability, good relationship with parents/bonding and attachment to family, opportunities and rewards for prosocial bonding. Peer level: Good relationship with peers (including having non-delinquent peers), involvement with positive peer group activities and norms, positive peer role models.
- **School level:** High expectations, above-average academic achievement, high quality schools/clear standards and rules for appropriate behavior, opportunities and rewards for pro-social student bonding and involvement.
- **Community level:** Non-disadvantaged neighborhood and safe, supportive environment; high expectations for youth; presence and involvement of caring/supportive adults; pro-social opportunities/opportunities for participation/availability of neighborhood resources.

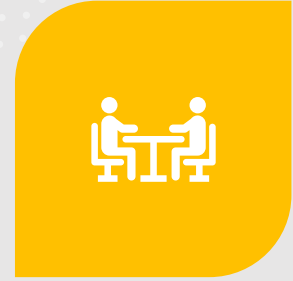
Tracking TAY Programming Progress (outcomes)



QUARTERLY REPORTS-



MONTHLY PROGRESS REVIEW-
PROGRESS AND BARRIERS WILL BE
REVIEWED AND POTENTIAL
ADJUSTMENTS DISCUSSED



CONVENED LEARNING
CONVERSATIONS-INSIGHTS AND
INFORMATION GAINED VIA INSIGHT
INTO OTHER'S EXPERIENCES
(TALKING TO EACH OTHER)



ANNUAL REPORT-INTEGRATE
BREAKTHROUGHS AND SUCCESS



INFORMAL CONVERSATIONS & EMAIL
EXCHANGE – ONGOING AS NEEDED
BASIS



Key Aspects of VC Interagency Core Practice Model: What's Needed for Interagency Collaboration for Reintegration of Transition Age Youth

- Outreach & Engagement
- Deliver information, referral & assistance
- High-Quality, culturally grounded prevention and intervention
- Evidence –Based & Evidence –Informed Practices
- Celebrating transition-education & support

Document/ Publish Article/ OJJDP/JJIE

- [Police Must Learn About Child Development Before Working With At ...](#)
- [Juvenile Justice Information Exchange › 2018/01/22 › police-must-learn-about-child-development-before-..](#)
- [Law Enforcement, Child Development People Must Communicate ...](#)
- [Juvenile Justice Information Exchange › 2019/07/29 › code-switching](#)